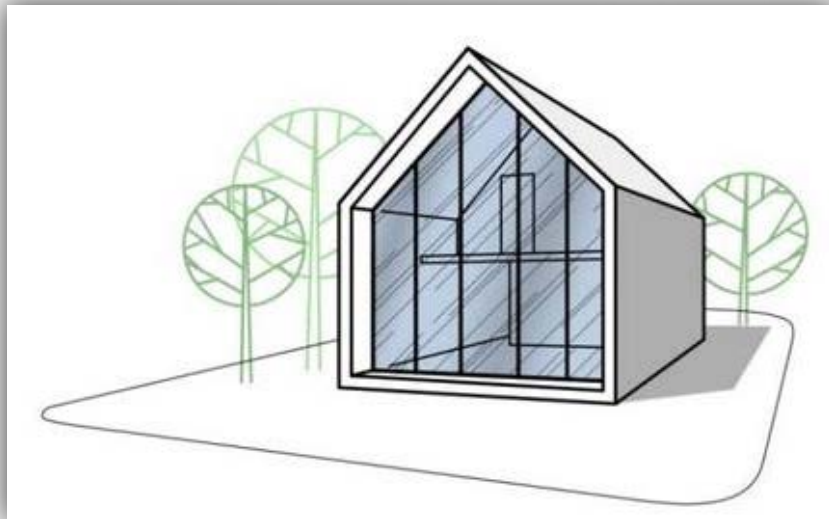
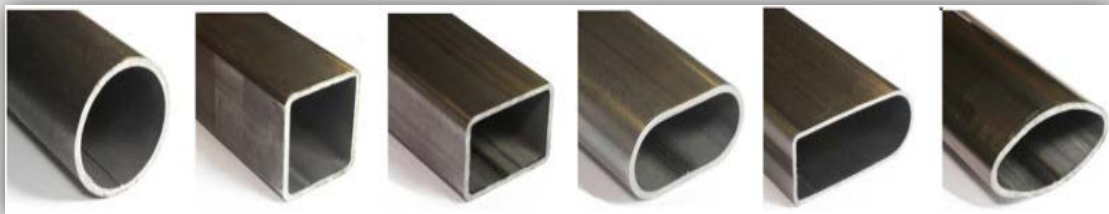


# TUBULAR SOLUTIONS



[WWW.STEELBUILD.IN](http://WWW.STEELBUILD.IN)



### WHY TUBULAR SECTION ?

- The excellent distribution of material around the axis of tubular sections allows for remarkable strength properties.
- TUBULAR SECTIONS are available in two grades YST 355 and YST 310, which results in substantial steel and cost saving compared to conventional steel sections of YST 250 grade.
- By virtue of its shape, hollow sections have a high Radius of Gyration compared to open structural, this makes them most efficient for compression members.
- They are widely used for Compression columns across the world.
- Due to closeness of the section there will be higher torsional rigidity compared to conventional sections.
- Better lateral stability and lower wind drag.
- The higher strength to weight ratio could result in up to 30% savings in steel.
- Wide variety of sizes and thickness, which will result in optimizing the sections as per loading (thickness varies from 2 mm to 10 mm).

### ADVANTAGES

- Due to lower weight and smoother profile, fabrication is easier.
- Minimum use of gusset plates expedites the fabrication process and reduces steel usage (plates)
- Due to higher torsional rigidity and better moment resistance on both axis bending of hollow section is easier compared to open sections.
- Smooth profile of Tata Structura enhances the aesthetic appeal of the structures.
- Most suitable for usage in exposed environment.
- Less surface area compared to equivalent conventional sections results in time saved from painting.
- Less exposed surface area combined with superior quality raw material results in less corrosion.
- Smooth uniform profiles of sections minimizes dust and moisture accumulation.

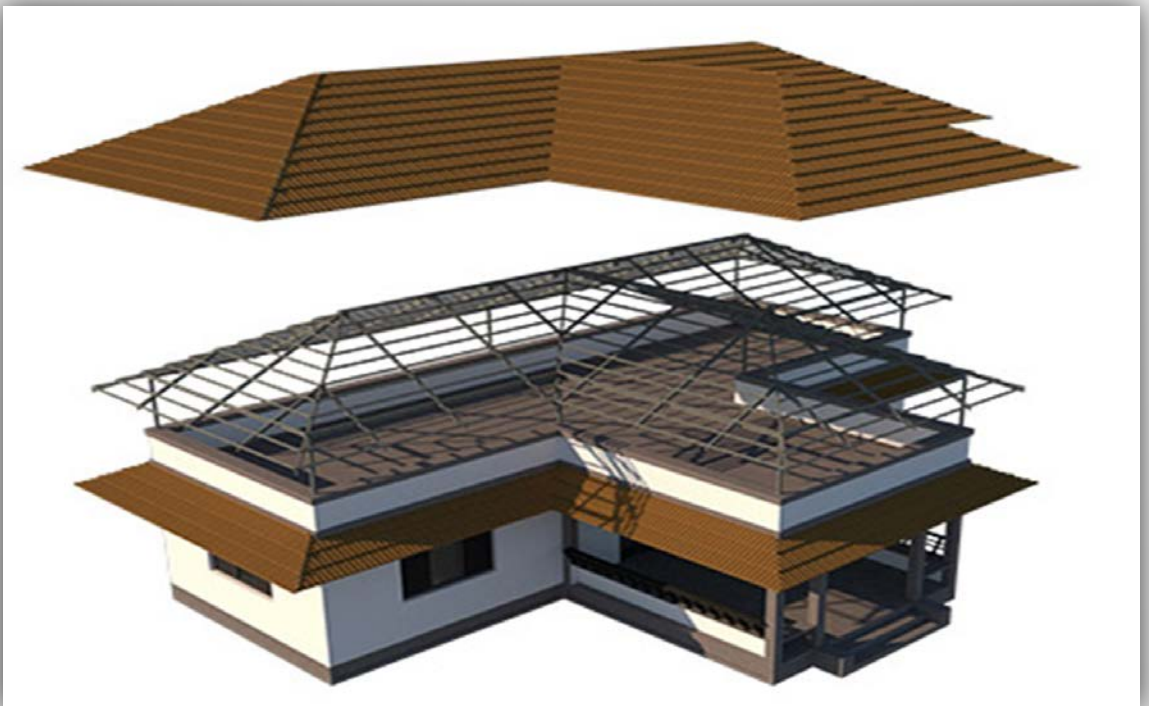
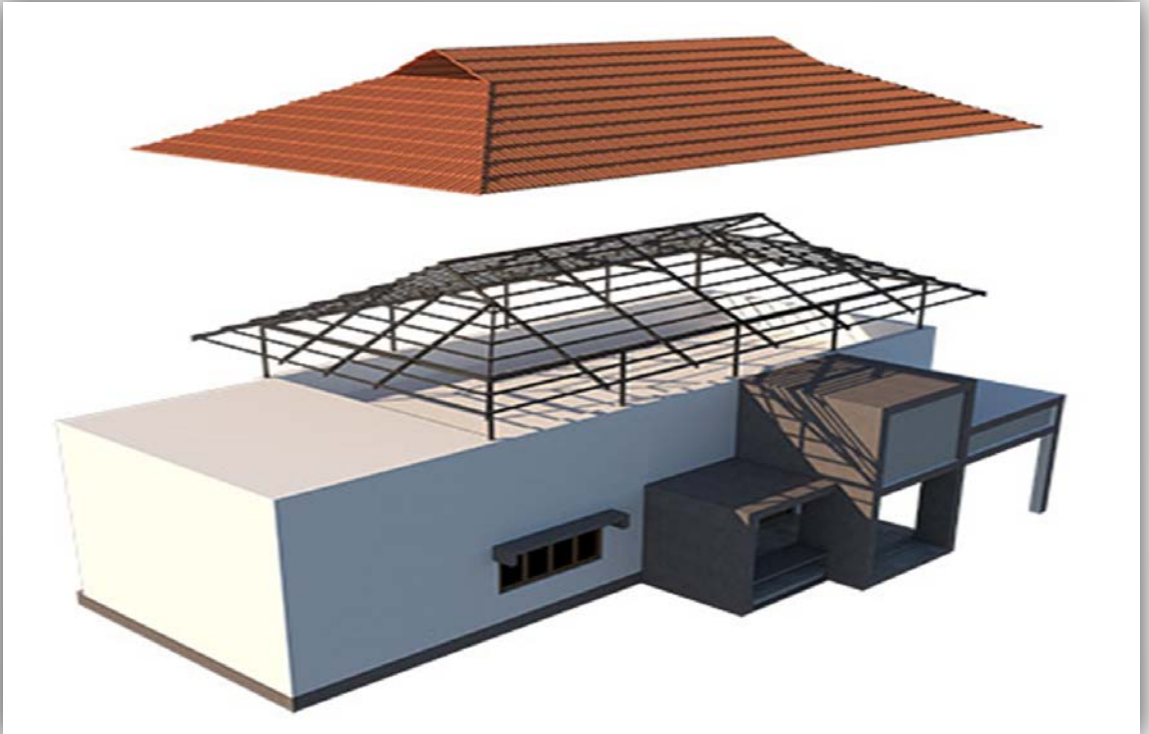
### EASE OF FABRICATION

- 30% weight saving has a direct impact on cost reduction.
- Fabrication cost is low due to the overall reduced weight.
- Lower weight of product leads to savings in transportation costs.
- Lower painting surface areas leads to a saving in painting costs.

### COST SAVINGS

- 30% weight saving has a direct impact on cost reduction.
- Fabrication cost is low due to the overall reduced weight.
- Lower weight of product leads to savings in transportation costs.
- Lower painting surface areas leads to a saving in painting costs.

# ROOFING SOLUTIONS





# WAREHOUSE / GARRAGES / SHEDS



FRIGORIFIC HALL



PRODUCTION HALL



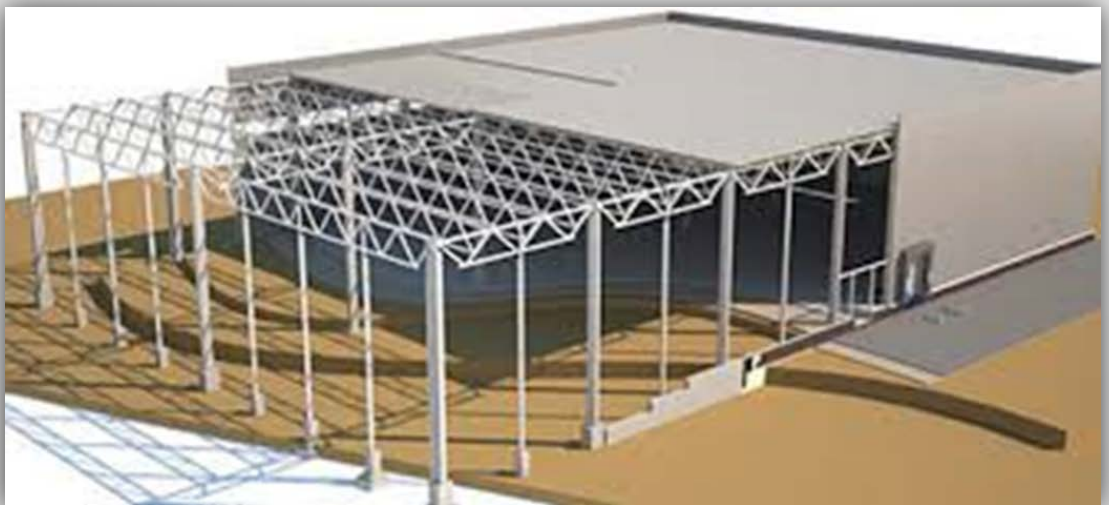
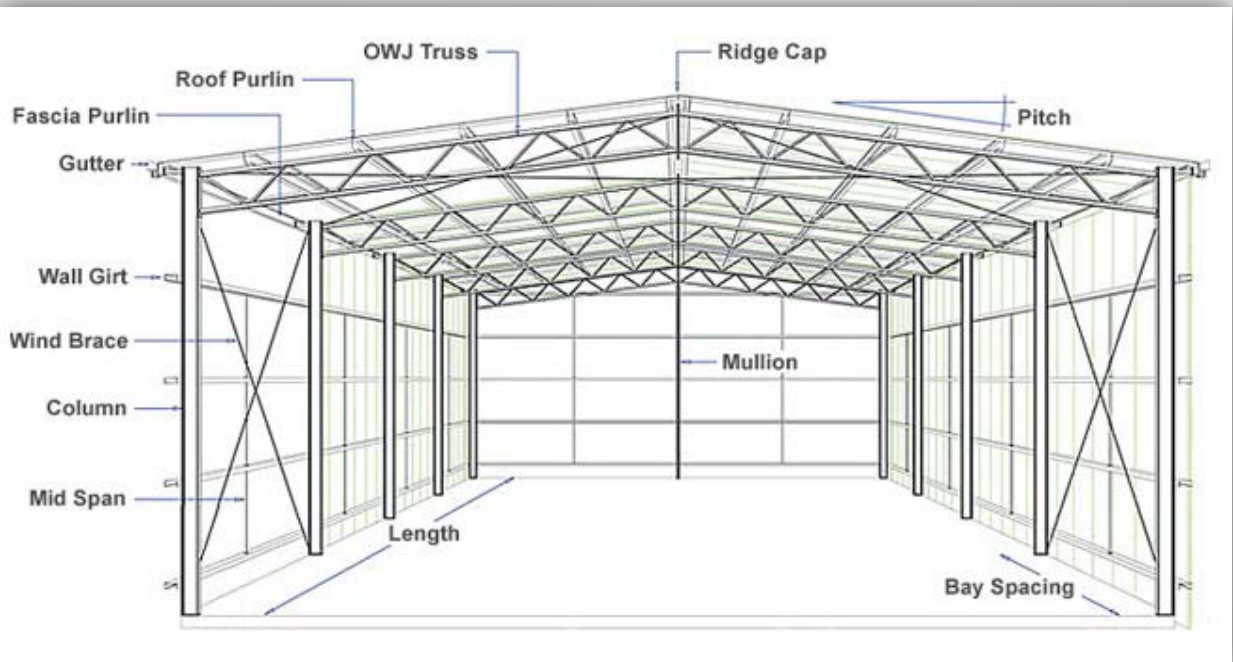
AUTO SERVICE HALL



STORAGE HALL



AGROZOOTEHNIC HALL



## INTERIOR / EXTERIOR





**CONTACT US :**

**STEEL BUILD ENGINEERING**

**WHATSAPP: +91-72-595-83338**

**EMAIL: STEELBUILD.IN@GMAIL.COM**

**WEBSITE: WWW.STEELBUILD.IN**